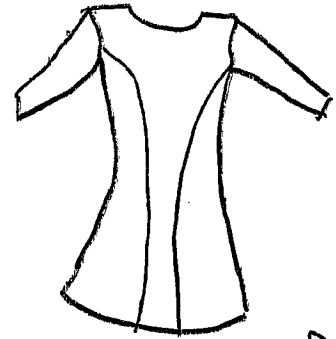
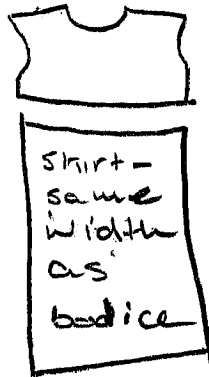
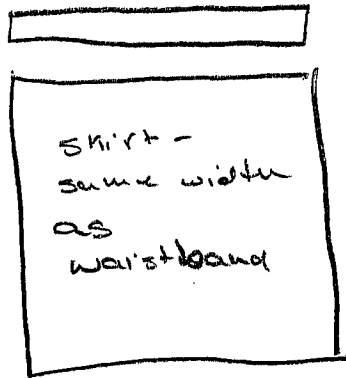


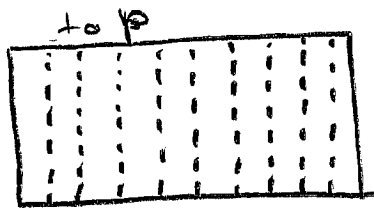
Flounces/circle skirts.

Start with your waistband, bodice waist, or hem line - the part to which the piece will attach.

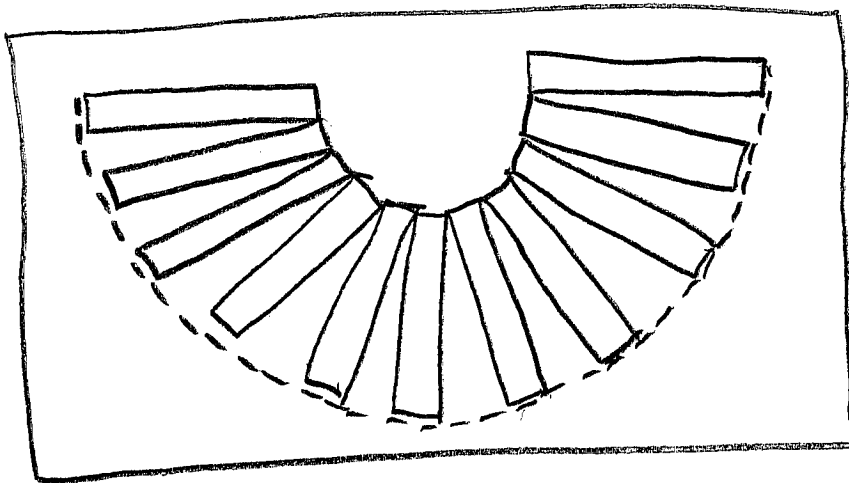


Flounce - same width as hem

make paper rectangles



cut the rectangle from bottom to top, leaving a tiny piece uncut at the top to act as a hinge.



lay the cut paper on top of another. spread the bottom out. Tape the stacked pieces onto the bottom paper. Draw the edge on, add

seam and hem allowances (Best to make the hem allowance small) and you're ready to cut!